



Global Trends in Charitable Impact Measurement

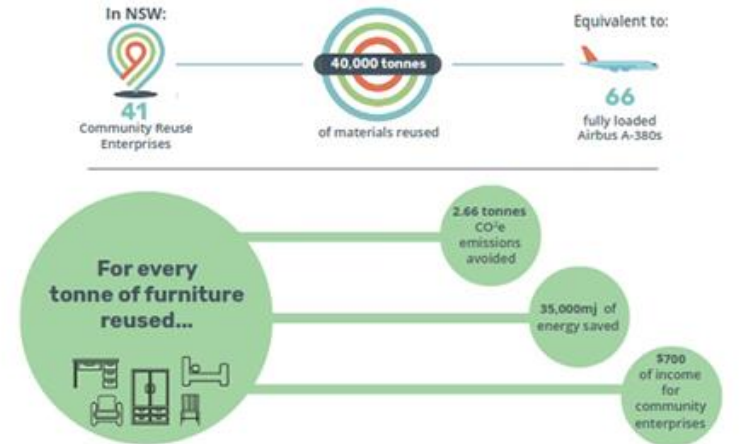
NACRO Annual Conference 2019

Background

Objective: to incentivise reuse and link resource recovery with social and economic goals

- Data gaps: Social impact / reuse / local development
- NSW Social Impact Study – 2017
- Data Collection Pilot Project - 2018
- NACRO and ZWN Merger – 2019
- Churchill Fellowship – 2019/2020

Community Reuse Enterprises in the Circular Economy



For every 10,000 tonnes of resources...

Reuse: 195 FTE jobs



Recycling: 9.2 FTE jobs



Landfill: 2.8 FTE jobs



CRE sector in NSW: ZWN IMT Pilot Project Report, www.zerowastenetwork.org.au/research/impacts/ tonne of reuse: WRAP UK Reuse Tool, includes displacement of new products. www.wrap.org.uk/content/benefits-product-re-use-tool
Reuse FTE/ 10,000: ZWN IMT Pilot Project Report, [www.zerowastenetwork.org.au/research/Recycling and Landfill FTE/ 10,000:](http://www.zerowastenetwork.org.au/research/Recycling%20and%20Landfill%20FTE/) Au Govt. www.environment.gov.au/protection/waste-resource-recovery/publications/employment-waste-management-and-recycling
Data Current as of May 2019

1. Sector/ Government/ Industry

HOW MANY PAID CASUAL WORKERS, INCLUDING OWNERS AND MANAGERS, WERE WORKING IN YOUR ENTERPRISE DURING THE FINAL PAY PERIOD OF THE NAMED REPORTING YEAR?

1

HOW MANY VOLUNTEERS OR UNPAID WORKERS WERE INVOLVED WITH THE ENTERPRISE DURING THE FINAL PAY PERIOD OF THE NAMED REPORTING YEAR?

10

WHAT IS YOUR ESTIMATE OF THE TOTAL NUMBER OF HOURS OF IN-KIND SUPPORT RECEIVED FROM EXTERNAL ORGANISATIONS OVER THE NAMED REPORTING YEAR?

1000

WHAT IS YOUR ESTIMATE OF THE TOTAL FINANCIAL VALUE OF IN-KIND ASSETS PROVIDED OVER THE NAMED REPORTING YEAR?

500

Social Performance

WOULD YOU LIKE TO CONTINUE AND PROVIDE INFORMATION ABOUT YOUR SOCIAL ENTERPRISE'S SOCIAL PERFORMANCE?

Yes

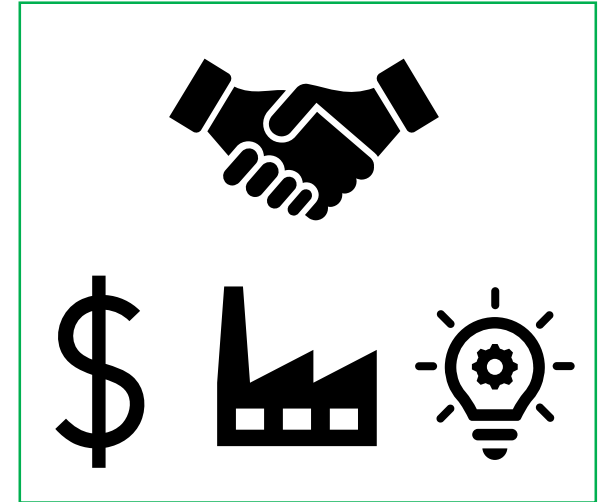
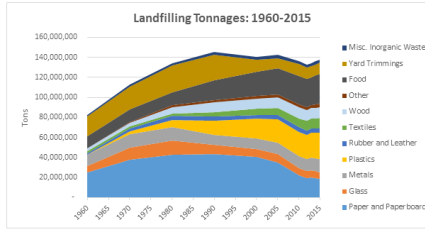
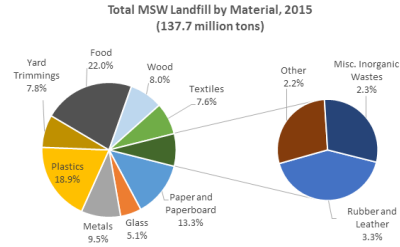
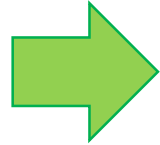
Outputs

DO YOU DIRECTLY EMPLOY YOUR BENEFICIARIES IN YOUR ORGANISATION?

Yes

HOW MANY FULL-TIME EQUIVALENT (FTE) BENEFICIARIES WERE EMPLOYED BY YOUR ORGANISATION IN THE NAMED REPORTING YEAR?

2



2. Consumers

Impact Calculator

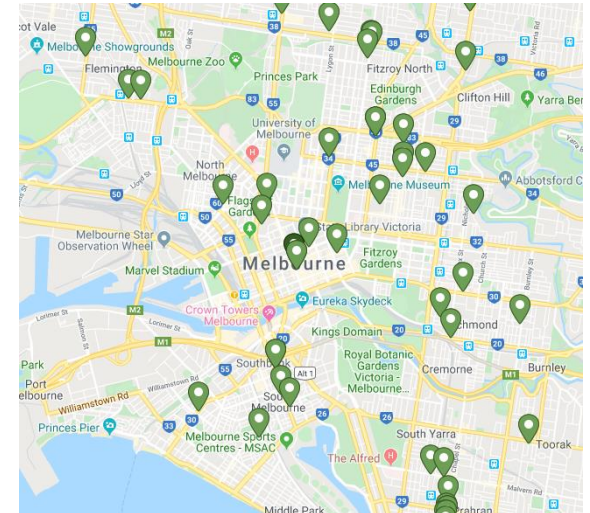
 Household Furniture e.g. dining table, chair, chest of drawers <input type="text" value="0"/>	 Seating / upholstered furniture e.g. sofa, armchair <input type="text" value="0"/>	 Large Household Appliances e.g. fridge, washing machine, dishwasher <input type="text" value="0"/>
 Beds & Mattresses e.g. mattress, bed base, divan base <input type="text" value="0"/>	 ICT e.g. computer, mobile phone, TV <input type="text" value="0"/>	 Small Household Appliances e.g. microwave, kettle, toaster <input type="text" value="0"/>



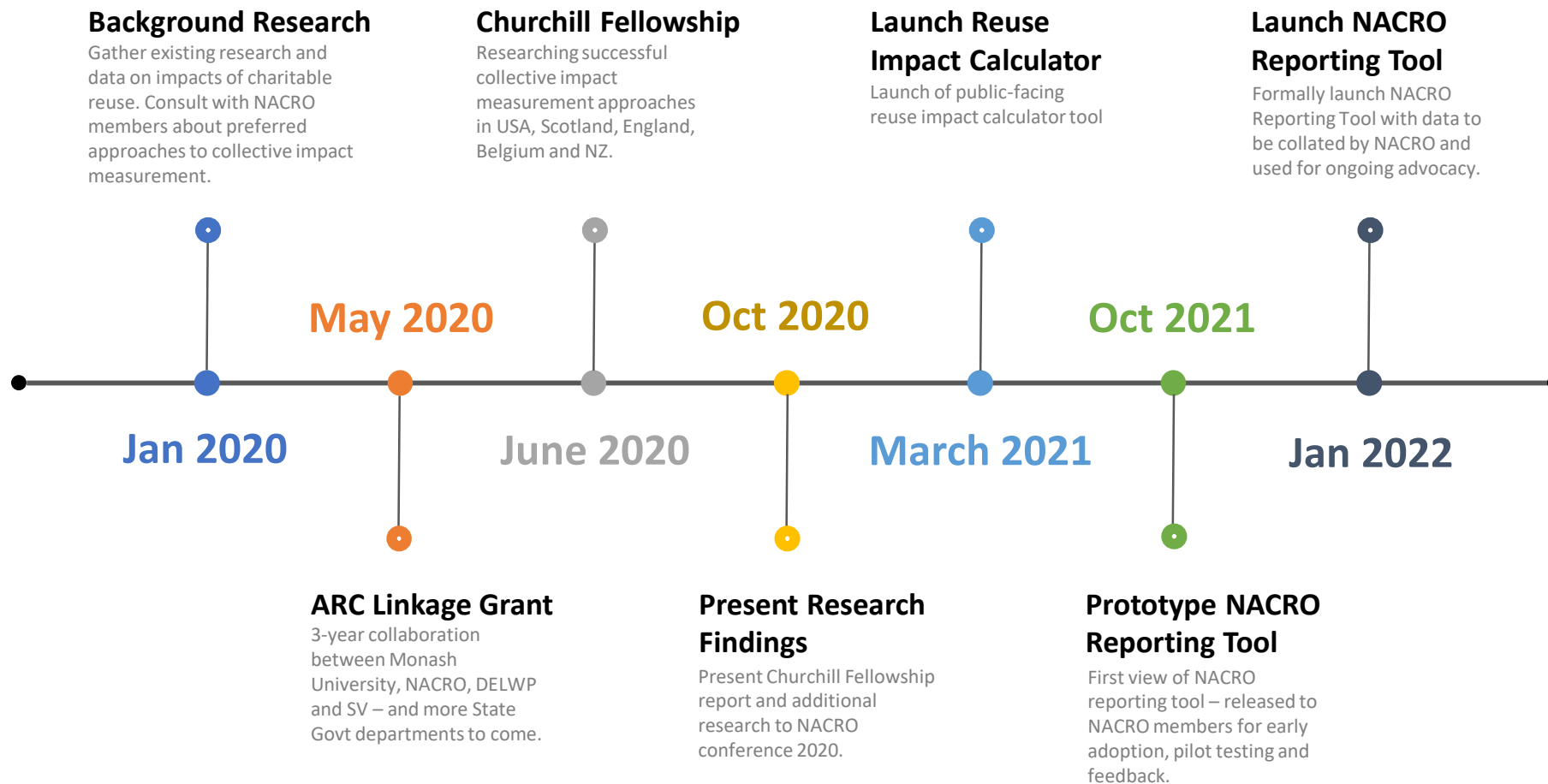
Your impact:

5	£685	254kg
Households helped	Household savings	CO2 savings

[Donate your items](#)



Timeline 2019-2022



How to get involved...

- Suggest contacts and sites to visit on Churchill Fellowship
- Participate in upcoming surveys on impact measurement in your organization
- Share techniques and resources on impact measurement
- Participate in ARC Linkage Grant as a Research Site
- Join the NACRO Impact Measurement Sub-committee

MATTHEW ALLEN
Program and Sustainability Manager



0432 538 827
matt.allen@nacro.org.au