



2021
IMPACT REPORT

HELP US HELP YOU

How the charitable recycling
sector can help all levels of
government meet Australia's 2030
National Waste Policy targets



A person is shown from the chest up, wearing a white t-shirt. The background is a solid teal color. In the top right corner, there is a yellow square with a black line curving downwards and to the left, ending in a small purple rectangle.

When you look at

THE BIG PICTURE

charitable reuse and recycling can
make a big difference in helping Australia
move towards a circular economy.

The comparative study we commissioned in this report
proves that the sector not only significantly reduces waste
but has both social and environmental benefits, too.
And, in turn, will help inform our decisions that will benefit
people, planet and profit now and in the future.

Australia's 2030 National Waste targets aim to...

Reduce total waste
generated in Australia by

10%
per
person

That's 300kg per person




Achieve

80%

average resource recovery rate
from all waste streams

The charitable recycling sector is already well ahead of that at **86% recovery rate across the sector**, so we're well poised to help you achieve your goals.





In FY20, charitable recycling
helped divert over **1 million tonnes**
of waste from landfill

That's around 39kg per person per year

Our infrastructure is **enormous**



3,000+

charity and social
enterprise retailers



10,000

charity collection bins



5,295

full-time employees



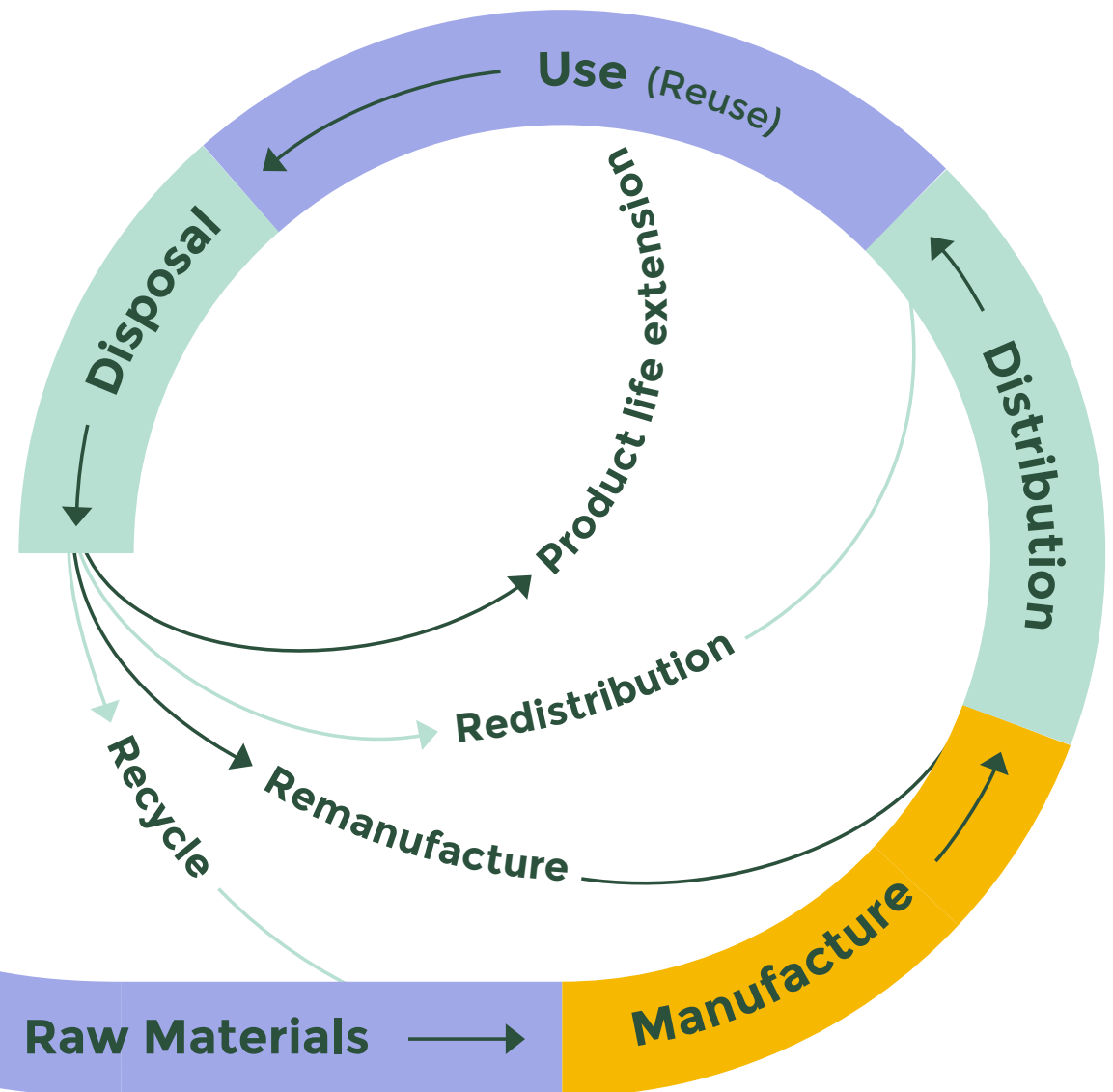
33,500

volunteers

What we collect is re-used through charity and recycled domestically

(Or sent overseas to be reused there)

It's all part of the
circular economy,
in which charitable
recycling plays
a crucial role




How does this help?

Let's take textiles as an example


Not only does this re-use **reduce pressure on landfills**, it also has a **far lower environmental impact** than new clothes

86% of what we collect is recovered and reused


16.5% Sold in charity shop **36%** Recycled domestically **0.5%** Provided as welfare **33%** Exported for reuse overseas

 **66%** reduction in **carbon emissions** across the supply chain
GHG Emission savings 888,000 tonnes/yr

 **59%** reduction in **global energy use**
Energy use saved 1.9 Million MWh/yr

 **57%** reduction in **global water consumption**
Water consumption saved 88,000 ML/yr





As well as reducing
waste, charitable
recycling helps create
social and economic
benefits, too



**Environmental
Benefits**



**Economic
Benefits**



**Social
Benefits**



Economically, we turn waste into money

As you know, a lot of the would-be waste we collect gets sold through charity shops, generating almost...

\$1 billion*
a year for the economy



A significant amount of this goes to support social programs

Creating over

5k

FTE jobs

And

33k

FTE volunteering opportunities

1,200 for people who would otherwise face barriers to employment, like disability

This creates community and can help prevent loneliness and mental health issues for many people

*\$961m in FY20

Of the \$1 billion, textiles represents \$527m in revenue to the Australian economy

That equates to



Socially, we provide services that take the pressure off government, including:



Aged care services



Emergency/crisis relief



Education programs



Hospital and health services



Hostel accommodation



Mental health services



Migrant/refugee assistance



Suicide prevention counselling



Food and shelter



Medical research



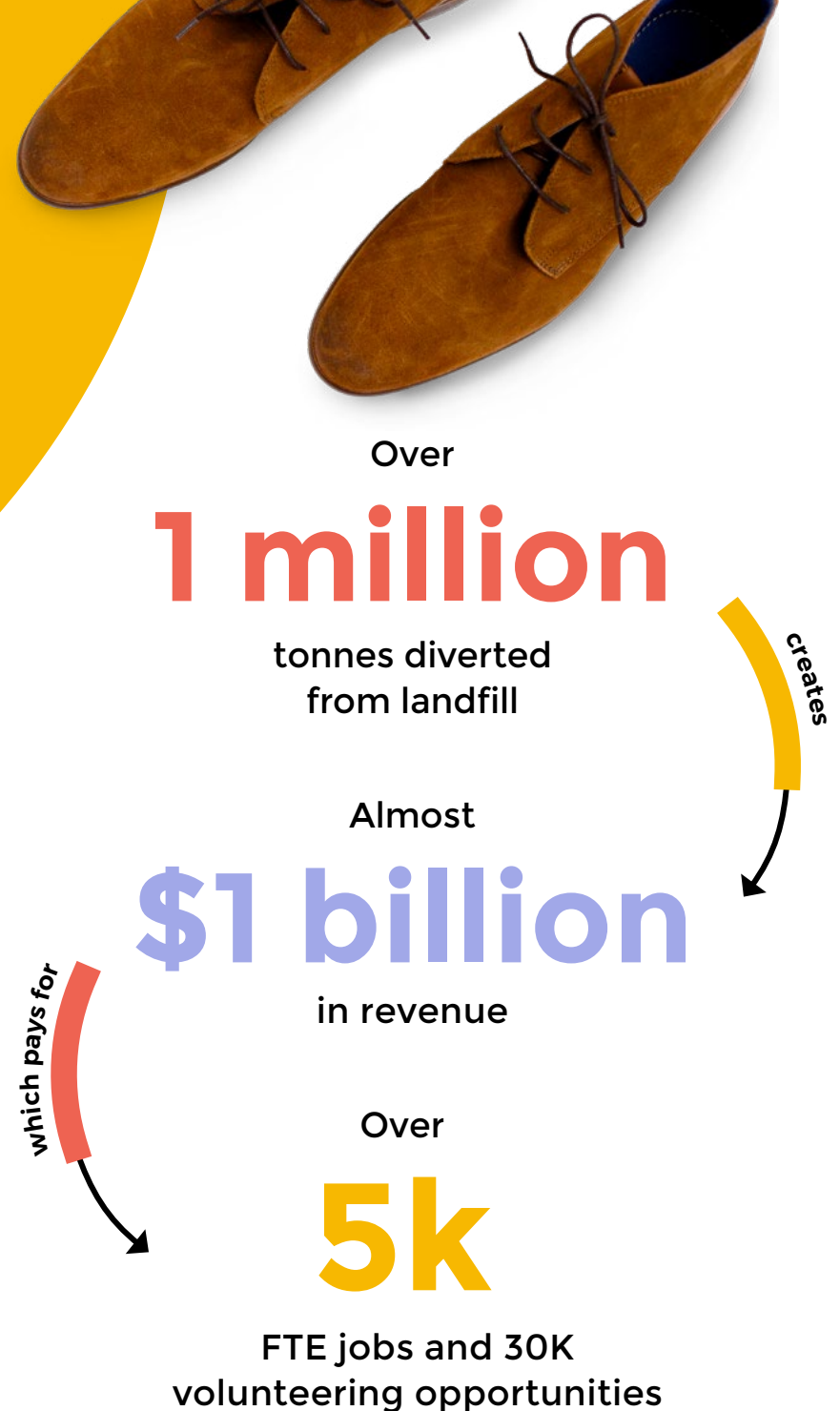
Disability services



When you look at the big picture, charitable recycling is a sector that deserves your support



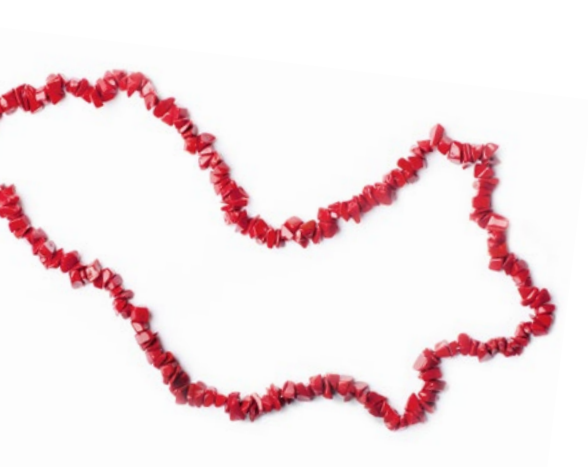
Because when you help us, we can help you



Charitable Recycling Australia is the collective network of charitable purpose-driven reuse and recycling enterprises

We engage with governments and communities to advance the circular economy and reduce charitable costs





About the research

Charitable Recycling Australia commissioned independent market researchers MRA Consulting Group to measure the triple-bottom line impact of the charitable reuse and recycling network.

The results in the report were determined through a comparison of a tonne of clothing in Australia going to landfill versus a tonne of clothing being collected through a Charitable Reuse and Recycling Sector Enterprise.

Detailed data was collected from 27 Charitable Reuse and Recycling Sector Enterprises, representing **54% of charity shops in Australia**.

The full report is available on request.

References:

1. MRA Consulting Group: Measuring the Impact of the Charitable Reuse and Recycling Sector - A comparative study using clothing donated to charitable enterprises, 3 March 2021.
2. National Waste Policy Action Plan 2019, <https://www.environment.gov.au/system/files/resources/5b86c9f8-074e-4d66-ab11-08bbc69da240/files/national-waste-policy-action-plan-2019.pdf>

charitablerecycling.org.au

